



**ELECTRONIC COPY**

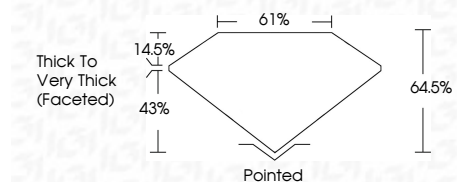
LG762582484  
Report verification at igi.org



January 19, 2026  
IGI Report Number **LG762582484**  
Description **LABORATORY GROWN DIAMOND**  
Shape and Cutting Style **OVAL MODIFIED BRILLIANT**  
Measurements **12.73 X 8.77 X 5.66 MM**

**GRADING RESULTS**

Carat Weight **5.15 CARATS**  
Color Grade **E**  
Clarity Grade **VVS 2**

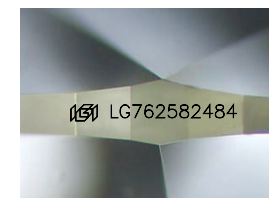


**ADDITIONAL GRADING INFORMATION**

Polish **EXCELLENT**  
Symmetry **EXCELLENT**  
Fluorescence **NONE**  
Inscription(s) **IGI LG762582484**  
Comments: Lightworks logo  
Pre-existing laser inscription on girdle.  
This Laboratory Grown Diamond was created by  
Chemical Vapor Deposition (CVD) growth process.  
Type IIa

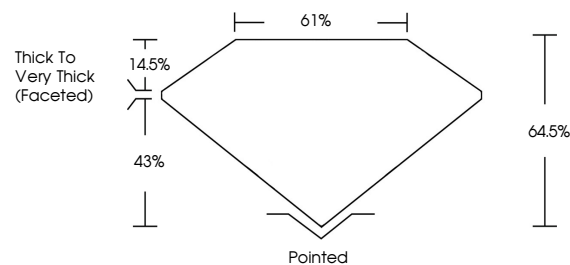


January 19, 2026  
IGI Report No **LG762582484**  
**OVAL MODIFIED BRILLIANT**  
12.73 X 8.77 X 5.66 MM  
Carat Weight **5.15 CARATS**  
Color Grade **E**  
Clarity Grade **VVS 2**  
Depth **64.5%**  
Table **14.5%**  
Girdle **Thick to Very Thick (Faceted)**  
Culet **Pointed**  
Polish **EXCELLENT**  
Symmetry **EXCELLENT**  
Fluorescence **NONE**  
Inscription(s) **IGI LG762582484**  
Comments:  
Lightworks logo  
Pre-existing laser inscription on girdle.  
This Laboratory Grown Diamond was  
created by Chemical Vapor Deposition  
(CVD) growth process.  
Type IIa

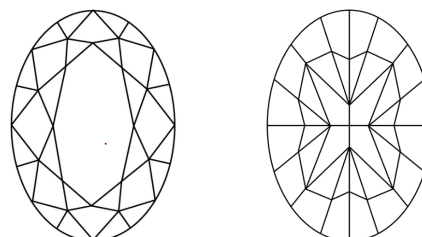


Sample Image Used

**PROPORTIONS**



**CLARITY CHARACTERISTICS**



**KEY TO SYMBOLS**

Red symbols indicate internal characteristics.  
Green symbols indicate external characteristics.

**COLOR**

D E F G H I J Faint Very Light Light

**CLARITY**

FL	IF	VVS <sup>1-2</sup>	VS <sup>1-2</sup>	SI <sup>1-2</sup>	I <sup>1-3</sup>
Flawless	Internally Flawless	Very Very Slightly Included	Very Slightly Included	Slightly Included	Included

