



ELECTRONIC COPY

LG732542357
Report verification at igi.org



September 4, 2025
IGI Report Number LG732542357
Description LABORATORY GROWN DIAMOND
Shape and Cutting Style CUT CORNERED RECTANGULAR MODIFIED BRILLIANT
Measurements 9.59 X 6.73 X 4.53 MM
GRADING RESULTS
Carat Weight 2.50 CARATS
Color Grade D
Clarity Grade VS 1

LABORATORY GROWN DIAMOND REPORT

September 4, 2025
IGI Report Number LG732542357
Description LABORATORY GROWN DIAMOND
Shape and Cutting Style CUT CORNERED RECTANGULAR MODIFIED BRILLIANT
Measurements 9.59 X 6.73 X 4.53 MM

GRADING RESULTS

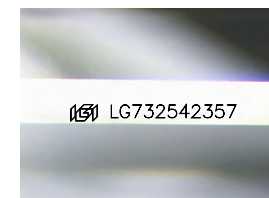
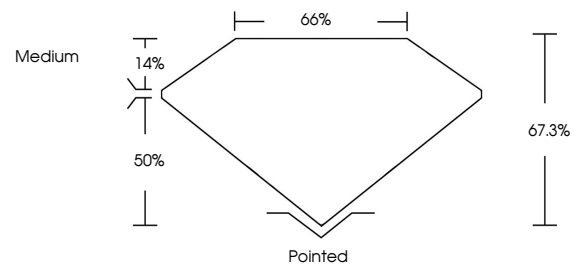
Carat Weight 2.50 CARATS
Color Grade D
Clarity Grade VS 1

ADDITIONAL GRADING INFORMATION

Polish EXCELLENT
Symmetry EXCELLENT
Fluorescence NONE
Inscription(s) IGI LG732542357

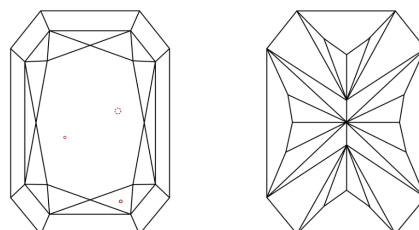
Comments: This Laboratory Grown Diamond was created by Chemical Vapor Deposition (CVD) growth process. Type IIa

PROPORTIONS



Sample Image Used

CLARITY CHARACTERISTICS



KEY TO SYMBOLS

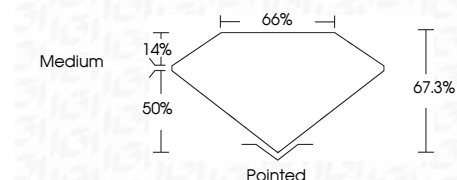
Red symbols indicate internal characteristics.
Green symbols indicate external characteristics.

COLOR

D E F G H I J Faint Very Light Light

CLARITY

IF WS 1-2 VS 1-2 SI 1-2 I 1-3
Internally Flawless Very Very Slightly Included Very Slightly Included Slightly Included Included



ADDITIONAL GRADING INFORMATION

Polish EXCELLENT
Symmetry EXCELLENT
Fluorescence NONE
Inscription(s) IGI LG732542357
Comments: This Laboratory Grown Diamond was created by Chemical Vapor Deposition (CVD) growth process. Type IIa



September 4, 2025
IGI Report No LG732542357
CUT CORNERED RECT. MODIFIED BRILLIANT
9.59 X 6.73 X 4.53 MM
2.50 CARATS
D
VS 1
67.3%
65%
Medium
Pointed
EXCELLENT
EXCELLENT
NONE
IGI LG732542357
Comments: This Laboratory Grown Diamond was created by Chemical Vapor Deposition (CVD) growth process. Type IIa