



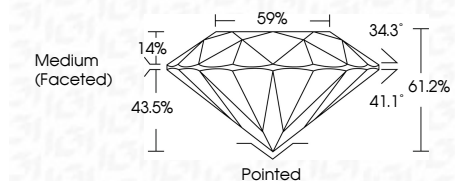
ELECTRONIC COPY

LG644434225 Report verification at igi.org



July 22, 2024 IGI Report Number LG644434225 Description LABORATORY GROWN DIAMOND Shape and Cutting Style ROUND BRILLIANT Measurements 7.89 - 7.91 X 4.83 MM

GRADING RESULTS Carat Weight 1.85 CARAT Color Grade F Clarity Grade VS 2 Cut Grade IDEAL

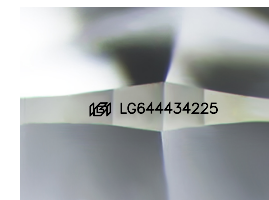


ADDITIONAL GRADING INFORMATION Polish EXCELLENT Symmetry EXCELLENT Fluorescence NONE Inscription(s) LG644434225 Comments: HEARTS & ARROWS This Laboratory Grown Diamond was created by Chemical Vapor Deposition (CVD) growth process. Type IIa



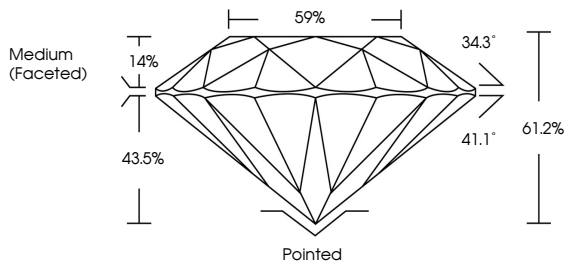
July 22, 2024 IGI Report No LG644434225 ROUND BRILLIANT 7.89 - 7.91 X 4.83 MM 1.85 CARAT F VS 2 IDEAL 61.2% 59% Medium (Faceted) Pointed EXCELLENT EXCELLENT NONE NONE LG644434225

Comments: HEARTS & ARROWS This Laboratory Grown Diamond was created by Chemical Vapor Deposition (CVD) growth process. Type IIa

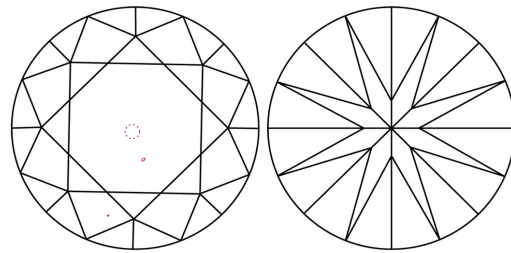


Sample Image Used

PROPORTIONS

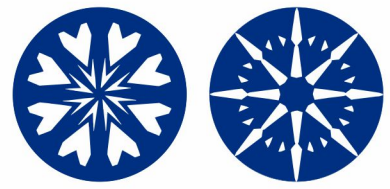


CLARITY CHARACTERISTICS



KEY TO SYMBOLS

Red symbols indicate internal characteristics. Green symbols indicate external characteristics.



COLOR

D E F G H I J Faint Very Light Light

CLARITY

IF VS 1-2 VS 1-2 SI 1-2 I 1-3 Internally Flawless Very Very Slightly Included Very Slightly Included Slightly Included Included



July 22, 2024 IGI Report Number LG644434225 Description LABORATORY GROWN DIAMOND Shape and Cutting Style ROUND BRILLIANT Measurements 7.89 - 7.91 X 4.83 MM

GRADING RESULTS Carat Weight 1.85 CARAT Color Grade F Clarity Grade VS 2 Cut Grade IDEAL

ADDITIONAL GRADING INFORMATION Polish EXCELLENT Symmetry EXCELLENT Fluorescence NONE Inscription(s) LG644434225

Comments: HEARTS & ARROWS This Laboratory Grown Diamond was created by Chemical Vapor Deposition (CVD) growth process. Type IIa