

**ELECTRONIC COPY**

## LABORATORY GROWN DIAMOND REPORT

January 27, 2024	
IGI Report Number	LG618406471
Description	LABORATORY GROWN DIAMOND
Shape and Cutting Style	ROUND BRILLIANT
Measurements	8.24 - 8.26 X 5.00 MM

## GRADING RESULTS

Carat Weight	2.08 CARATS
Color Grade	E
Clarity Grade	VS 1
Cut Grade	IDEAL

### ADDITIONAL GRADING INFORMATION

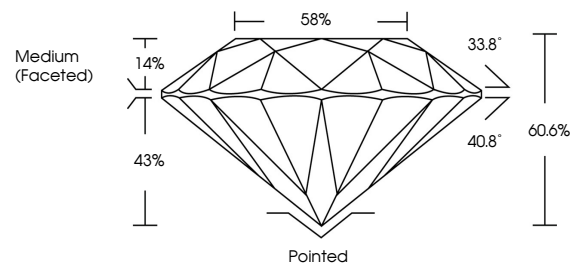
Polish	EXCELLENT
Symmetry	EXCELLENT
Fluorescence	NONE
Inscription(s)	LG618406471

Comments: This Laboratory Grown Diamond was created by Chemical Vapor Deposition (CVD) growth process and may include post-growth treatment.  
Type IIa

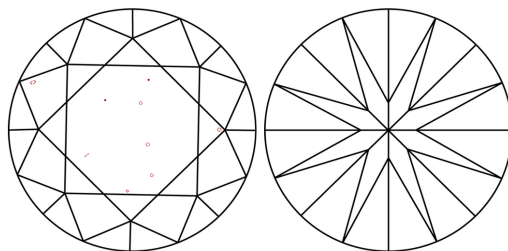
## LABORATORY GROWN DIAMOND REPORT

LG618406471  
Report verification at [igi.org](https://igi.org)

## PROPORTIONS



## CLARITY CHARACTERISTICS



## KEY TO SYMBOLS

Red symbols indicate internal characteristics.  
Green symbols indicate external characteristics.

LABORATORY GROWN  
DIAMOND REPORT

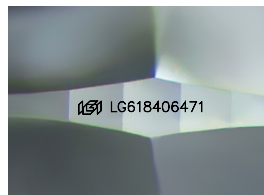
## GRADING SCALES

## CLARITY

IF	VVS <sup>1-2</sup>	VS <sup>1-2</sup>	SI <sup>1-2</sup>	I <sup>1-3</sup>
Internally Flawless	Very Very Slightly Included	Very Slightly Included	Slightly Included	Included

**COLOR**

D E F G H I J Faint Very Light Light



Sample Image Used

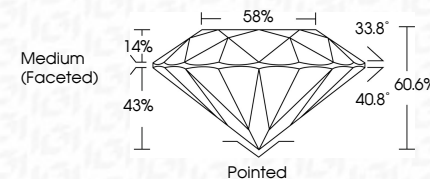


© IGI 2020, International Gemological Institute


FD - 10 20



January 27, 2024	
IGI Report Number	LG618406471
Description	LABORATORY GROWN DIAMOND
Shape and Cutting Style	ROUND BRILLIANT
Measurements	8.24 - 8.26 X 5.00 MM
<b>GRADING RESULTS</b>	
Carat Weight	2.08 CARATS
Color Grade	E
Clarity Grade	VS 1
Cut Grade	IDEAL



### ADDITIONAL GRADING INFORMATION

Polish	EXCELLENT
Symmetry	EXCELLENT
Fluorescence	NONE
Inscription(s)	 LG61840647
<p>Comments: This Laboratory Grown Diamond was created by Chemical Vapor Deposition (CVD) growth process and may include post-growth treatment.</p> <p>Type IIa</p>	

January 27, 2024	2.08 CARATS	Vs 1	Polished	Comments: This Laboratory Growth Diamond was created by Chemical Vapor Deposition (CVD) growth process and may include post-growth treatment.
GI Report No. LG1604671	60.6%	IDEAL	EXCELLENT	
ROUND BRILLIANT	66%	Medium (Faced)	EXCELLENT	
24.24 - 8.26 X 6.00 MM			NONE	
Carat Weight			g/g LG1604671	
Color Grade	Clarity Grade	Cut Grade	Symmetry	
		Depth	Fluorescence	
	Table	Girdle	Proportions(s)	
			Culet	Type IId