



**INTERNATIONAL
GEMOLOGICAL
INSTITUTE**

ELECTRONIC COPY

**LABORATORY GROWN
DIAMOND REPORT**

**IGI LABORATORY GROWN
DIAMOND ID REPORT**

August 10, 2022
IGI Report Number **LG530229516**

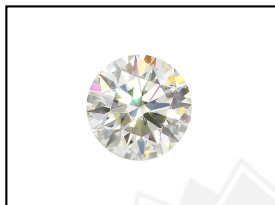
LABORATORY GROWN DIAMOND REPORT

LG530229516

ROUND BRILLIANT
4.48 - 4.50 X 2.74 MM
Carat Weight 0.34 CARAT
Color Grade G
Clarity Grade VVS 2
Cut Grade IDEAL
Polish EXCELLENT
Symmetry EXCELLENT
Fluorescence NONE
Inscription(s) LABGROWN IGI
LG530229516

IGI LABORATORY GROWN DIAMOND IDENTIFICATION REPORT

August 10, 2022
IGI Report Number LG530229516
Description LABORATORY GROWN DIAMOND
Shape and Cutting Style ROUND BRILLIANT
Measurements 4.48 - 4.50 X 2.74 MM



Comments: This Laboratory Grown Diamond was created by Chemical Vapor Deposition (CVD) growth process and may include post-growth treatment. Type IIa

GRADING RESULTS

Carat Weight 0.34 CARAT
Color Grade G
Clarity Grade VVS 2
Cut Grade IDEAL

LASERSCRIBESM
Sample Images Used



ADDITIONAL GRADING INFORMATION

Polish EXCELLENT
Symmetry EXCELLENT
Fluorescence NONE
Inscription(s) LABGROWN IGI LG530229516

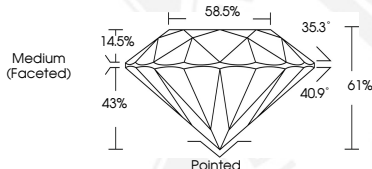
**IGI LABORATORY GROWN
DIAMOND ID REPORT**

August 10, 2022
IGI Report Number **LG530229516**

ROUND BRILLIANT
4.48 - 4.50 X 2.74 MM

Carat Weight 0.34 CARAT
Color Grade G
Clarity Grade VVS 2
Cut Grade IDEAL
Polish EXCELLENT
Symmetry EXCELLENT
Fluorescence NONE
Inscription(s) LABGROWN IGI
LG530229516

Comments: This Laboratory Grown Diamond was created by Chemical Vapor Deposition (CVD) growth process and may include post-growth treatment. Type IIa



THIS DOCUMENT WAS PRODUCED WITH THE FOLLOWING SECURITY MEASURES: SPECIAL DOCUMENT PAPER, INK SCREENS, WATERMARK, BACKGROUND DESIGN, HOLOGRAM AND OTHER SECURITY FEATURES NOT LISTED AND DO EXCEED DOCUMENT SECURITY INDUSTRY GUIDELINES.

For terms & conditions and to verify this report, please visit www.igi.org