



**INTERNATIONAL
GEMOLOGICAL
INSTITUTE**

LABORATORY GROWN DIAMOND REPORT

IGI LABORATORY GROWN DIAMOND IDENTIFICATION REPORT

12/27/2020
 IGI Report Number LG468174653
 Shape and Cutting Style ROUND BRILLIANT
 Measurements 4.32 - 4.35 X 2.66 MM

GRADING RESULTS

Carat Weight 0.30 CARAT
 Color Grade G
 Clarity Grade VVS 2
 Cut Grade IDEAL

ADDITIONAL GRADING INFORMATION

Polish EXCELLENT
 Symmetry EXCELLENT
 Fluorescence NONE
 Inscription(s) LABGROWN IGI LG468174653

Comments: This Chemical Vapor Deposition (CVD) laboratory grown diamond is classified as Type IIa.



This Laboratory Grown Diamond (LGD) described in this Report has been analyzed, graded and Laserscribed® by International Gemological Institute (IGI). A LGD has essentially the chemical, physical and optical properties as a mined diamond, with the exception of being man-made (a manufactured product). LGD's are typically produced by CVD (chemical vapor deposition) or by HPHT (high pressure high temperature) growth processes and may include post growth modifications to change the color. IGI utilizes the most advanced techniques and equipment currently available including, binocular microscopes, diamond color masters, non-contact-optical measuring device, a wide range analytical techniques including FTIR, UV-VIS-NIR, raman spectroscopy, and fluorescence analysis at various excitation wavelengths. This Report includes advanced security features. This Report is neither a guarantee, valuation nor appraisal and by making the report IGI does not agree to purchase or replace the article.

INTERNATIONAL GEMOLOGICAL INSTITUTE, INC

ELECTRONIC COPY

LG468174653

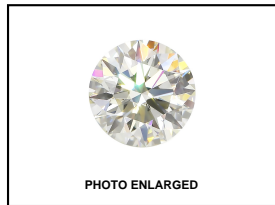
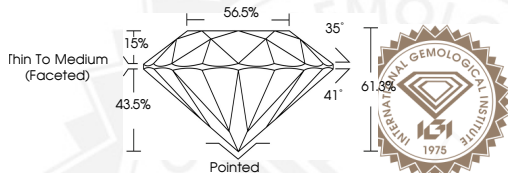


PHOTO ENLARGED



LABGROWN IGI LG468174653

LASERSCRIBE SM



**IGI LABORATORY GROWN
DIAMOND ID REPORT**

12/27/2020
 IGI Report Number **LG468174653**
ROUND BRILLIANT
4.32 - 4.35 X 2.66 MM
 Carat Weight 0.30 CARAT
 Color Grade G
 Clarity Grade VVS 2
 Cut Grade IDEAL
 Polish EXCELLENT
 Symmetry EXCELLENT
 Fluorescence NONE
 Inscription(s) LABGROWN IGI
 LG468174653

Comments: This Chemical Vapor Deposition (CVD) laboratory grown diamond is classified as Type IIa.

**IGI LABORATORY GROWN
DIAMOND ID REPORT**

12/27/2020
 IGI Report Number **LG468174653**
ROUND BRILLIANT
4.32 - 4.35 X 2.66 MM
 Carat Weight 0.30 CARAT
 Color Grade G
 Clarity Grade VVS 2
 Cut Grade IDEAL
 Polish EXCELLENT
 Symmetry EXCELLENT
 Fluorescence NONE
 Inscription(s) LABGROWN IGI
 LG468174653

Comments: This Chemical Vapor Deposition (CVD) laboratory grown diamond is classified as Type IIa.

THIS DOCUMENT WAS PRODUCED WITH THE FOLLOWING SECURITY MEASURES: SPECIAL DOCUMENT PAPER, INK SCREENS, WATERMARK BACKGROUND DESIGN, HOLOGRAM AND OTHER SECURITY FEATURES NOT LISTED AND DO EXCEED DOCUMENT SECURITY INDUSTRY GUIDELINES.

For Terms & Conditions and to verify this report, please visit www.igi.org