



INTERNATIONAL GEMOLOGICAL INSTITUTE

LABORATORY GROWN DIAMOND REPORT

IGI LABORATORY GROWN DIAMOND IDENTIFICATION REPORT

12/29/2020

IGI Report Number LG464196554

Shape and Cutting Style ROUND BRILLIANT

Measurements 4.39 - 4.41 X 2.73 MM

GRADING RESULTS

Carat Weight 0.32 CARAT

Color Grade E

Clarity Grade VS 1

Cut Grade IDEAL

ADDITIONAL GRADING INFORMATION

Polish EXCELLENT

Symmetry EXCELLENT

Fluorescence NONE

Inscription(s) LABGROWN IGI LG464196554

Comments: This Chemical Vapor Deposition (CVD) laboratory grown diamond is classified as Type IIa.



This Laboratory Grown Diamond (LGD) described in this Report has been analyzed, graded and Laserscribed® by International Gemological Institute (IGI). A LGD has essentially the chemical, physical and optical properties as a mined diamond, with the exception of being man-made (a manufactured product). LGDs are typically produced by CVD (chemical vapor deposition) or by HPHT (high pressure high temperature) growth processes and may include post growth modifications to change the color. IGI utilizes the most advanced techniques and equipment currently available including, binocular microscopes, diamond color masters, non-contact-optical measuring device, a wide range analytical techniques including FTIR, UV-VIS-NIR, raman spectroscopy, and fluorescence analysis at various excitation wavelengths. This Report includes advanced security features. This Report is neither a guarantee, valuation nor appraisal and by making the report IGI does not agree to purchase or replace the article.

INTERNATIONAL GEMOLOGICAL INSTITUTE, INC

ELECTRONIC COPY

LG464196554

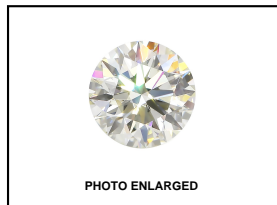
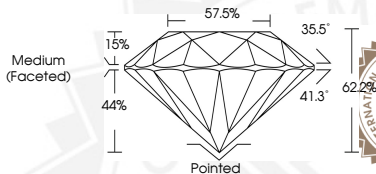


PHOTO ENLARGED



LASERSCRIBE SM



IGI LABORATORY GROWN DIAMOND ID REPORT

12/29/2020

IGI Report Number LG464196554

ROUND BRILLIANT

4.39 - 4.41 X 2.73 MM

Carat Weight 0.32 CARAT

Color Grade E

Clarity Grade VS 1

Cut Grade IDEAL

Polish EXCELLENT

Symmetry EXCELLENT

Fluorescence NONE

Inscription(s) LABGROWN IGI
LG464196554

Comments: This Chemical Vapor Deposition (CVD) laboratory grown diamond is classified as Type IIa.

IGI LABORATORY GROWN DIAMOND ID REPORT

12/29/2020

IGI Report Number LG464196554

ROUND BRILLIANT

4.39 - 4.41 X 2.73 MM

Carat Weight 0.32 CARAT

Color Grade E

Clarity Grade VS 1

Cut Grade IDEAL

Polish EXCELLENT

Symmetry EXCELLENT

Fluorescence NONE

Inscription(s) LABGROWN IGI
LG464196554

Comments: This Chemical Vapor Deposition (CVD) laboratory grown diamond is classified as Type IIa.



THIS DOCUMENT WAS PRODUCED WITH THE FOLLOWING SECURITY MEASURES: SPECIAL DOCUMENT PAPER, INK SCREENS, WATERMARK BACKGROUND DESIGN, HOLOGRAM AND OTHER SECURITY FEATURES NOT LISTED AND DO EXCEED DOCUMENT SECURITY INDUSTRY GUIDELINES.

For Terms & Conditions and to verify this report, please visit www.igi.org