



INTERNATIONAL
GEMOLOGICAL
INSTITUTE

ELECTRONIC COPY

IGI GEMOLOGICAL REPORT

IGI LABORATORY GROWN DIAMOND GRADING REPORT

Report Date **January 5, 2020**
IGI Report Number **LG400938661**
Shape and Cutting Style **ROUND BRILLIANT**
Measurements **4.44 - 4.47 X 2.73 MM**

GRADING RESULTS

Carat Weight **0.32 Carat**
Color Grade **F**
Clarity Grade **VVS 2**
Cut Grade **EXCELLENT**

ADDITIONAL GRADING INFORMATION

Polish **EXCELLENT**
Symmetry **EXCELLENT**
Fluorescence **NONE**
Inscription(s) **LABGROWN IGI LG400938661**

Comments: **This Chemical Vapor Deposition (CVD) laboratory grown diamond is classified as Type IIa**



The Laboratory Grown Diamond (LGD) described in this Report has been analyzed, graded, and LaserScribed® by International Gemological Institute (IGI). A LGD has essentially the same chemical, physical and optical properties as a mined diamond, with the exception of being man-made (a manufactured product). LGDs are typically produced by CVD (chemical vapor deposition) or by HPHT (high pressure high temperature) growth processes and may include post-growth modifications to change the color. IGI utilizes the most advanced techniques and equipment currently available including binocular microscopes, diamond color masters, non-contact optical measuring devices, a wide range of analytical techniques including FTIR, UV-VIS-NIR, Raman spectroscopy, and fluorescence analysis at various excitation wavelengths. This Report includes advanced security features. This Report is neither a guarantee, valuation nor appraisal and by making this report IGI does not agree to purchase or replace the article.

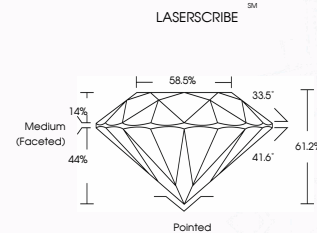
© INTERNATIONAL GEMOLOGICAL INSTITUTE, INC.

For Terms & Conditions, please visit www.igi.org

LABORATORY GROWN DIAMOND REPORT

LG400938661

ADDITIONAL INFORMATION



IGI LABORATORY GROWN DIAMOND ID REPORT

IGI Report Number **LG400938661**
Report Date **January 5, 2020**
Shape **ROUND BRILLIANT**

Carat Weight **0.32 Carat**
Color Grade **F**
Clarity Grade **VVS 2**
Cut Grade **EXCELLENT**
Polish **EXCELLENT**
Symmetry **EXCELLENT**
Fluorescence **NONE**
Inscription(s) **LABGROWN IGI LG400938661**

Comments: **This Chemical Vapor Deposition (CVD) laboratory grown diamond is classified as Type IIa**

IGI LABORATORY GROWN DIAMOND ID REPORT

IGI Report Number **LG400938661**
Report Date **January 5, 2020**
Shape **ROUND BRILLIANT**

Carat Weight **0.32 Carat**
Color Grade **F**
Clarity Grade **VVS 2**
Cut Grade **EXCELLENT**
Polish **EXCELLENT**
Symmetry **EXCELLENT**
Fluorescence **NONE**
Inscription(s) **LABGROWN IGI LG400938661**

Comments: **This Chemical Vapor Deposition (CVD) laboratory grown diamond is classified as Type IIa**



THIS DOCUMENT WAS PRODUCED WITH THE FOLLOWING SECURITY MEASURES: SPECIAL DOCUMENT PAPER, INK SCREENS, WATERMARK, BACKGROUND DESIGNS, HOLOGRAM AND OTHER SECURITY FEATURES NOT LISTED AND DO EXCEED DOCUMENT SECURITY INDUSTRY GUIDELINES.