



**INTERNATIONAL
GEMOLOGICAL
INSTITUTE**

ELECTRONIC COPY

LABORATORY GROWN DIAMOND REPORT

**IGI LABORATORY GROWN
DIAMOND ID REPORT**

IGI GEMOLOGICAL REPORT

ADDITIONAL INFORMATION

IGI Report Number **LG395983337**
Report Date **November 27, 2019**
Shape **ROUND BRILLIANT**

Carat Weight **0.30 Carat**
Color Grade **E**
Clarity Grade **VS 1**
Cut Grade **IDEAL**
Polish **EXCELLENT**
Symmetry **EXCELLENT**
Fluorescence **NONE**
Inscription(s) **LABGROWN IGI
LG395983337**

Comments:
This Chemical Vapor Deposition (CVD) laboratory grown diamond is classified as Type IIa

**IGI LABORATORY GROWN
DIAMOND ID REPORT**

IGI Report Number **LG395983337**
Report Date **November 27, 2019**
Shape **ROUND BRILLIANT**

Carat Weight **0.30 Carat**
Color Grade **E**
Clarity Grade **VS 1**
Cut Grade **IDEAL**
Polish **EXCELLENT**
Symmetry **EXCELLENT**
Fluorescence **NONE**
Inscription(s) **LABGROWN IGI
LG395983337**

Comments:
This Chemical Vapor Deposition (CVD) laboratory grown diamond is classified as Type IIa

IGI LABORATORY GROWN DIAMOND GRADING REPORT

Report Date **November 27, 2019**
IGI Report Number **LG395983337**
Shape and Cutting Style **ROUND BRILLIANT**
Measurements **4.38 - 4.41 X 2.61 MM**

GRADING RESULTS

Carat Weight **0.30 Carat**
Color Grade **E**
Clarity Grade **VS 1**
Cut Grade **IDEAL**

ADDITIONAL GRADING INFORMATION

Polish **EXCELLENT**
Symmetry **EXCELLENT**
Fluorescence **NONE**
Inscription(s) **LABGROWN IGI LG395983337**

Comments: **This Chemical Vapor Deposition (CVD) laboratory grown diamond is classified as Type IIa**



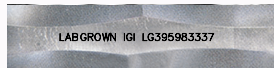
The Laboratory Grown Diamond (LGD) described in this Report has been analyzed, graded, and LaserScribed® by International Gemological Institute (IGI). A LGD has essentially the same chemical, physical and optical properties as a mined diamond, with the exception of being man-made (a manufactured product). LGDs are typically produced by CVD (chemical vapor deposition) or by HPHT (high pressure high temperature) growth processes and may include post-growth modifications to change the color. IGI utilizes the most advanced techniques and equipment currently available including binocular microscopes, diamond color masters, non-contact-optical measuring devices, a wide range of analytical techniques including FTIR, UV-VIS-NIR, Raman spectroscopy, and fluorescence analysis at various excitation wavelengths. This Report includes advanced security features. This Report is neither a guarantee, valuation nor appraisal and by making this report IGI does not agree to purchase or replace the article.

© INTERNATIONAL GEMOLOGICAL INSTITUTE, INC

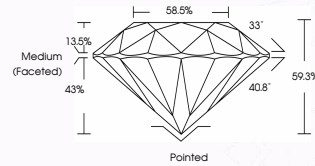
LG395983337



PHOTO ENLARGED



LASERSCRIBESM



THIS DOCUMENT WAS PRODUCED WITH THE FOLLOWING SECURITY MEASURES: SPECIAL DOCUMENT PAPER, INK SCREENS, WATERMARK, BACKGROUND DESIGN, HOLOGRAM AND OTHER SECURITY FEATURES NOT LISTED AND DO EXCEED DOCUMENT SECURITY INDUSTRY GUIDELINES.

For Terms & Conditions, please visit www.igi.org