



**INTERNATIONAL  
GEMOLOGICAL  
INSTITUTE**

**ELECTRONIC COPY**

**LABORATORY GROWN DIAMOND REPORT**

**IGI GEMOLOGICAL REPORT**

**ADDITIONAL INFORMATION**

**IGI LABORATORY GROWN  
DIAMOND ID REPORT**

IGI Report Number **LG389979297**  
 Report Date **December 23, 2019**  
 Shape **ROUND BRILLIANT**

Carat Weight **0.33 Carat**  
 Color Grade **E**  
 Clarity Grade **VVS 2**  
 Cut Grade **IDEAL**  
 Polish **VERY GOOD**  
 Symmetry **VERY GOOD**  
 Fluorescence **NONE**  
 Inscription(s) **LABGROWN IGI  
LG389979297**

Comments:  
 This Chemical Vapor Deposition (CVD)  
 laboratory grown diamond is classified  
 as Type IIa

**IGI LABORATORY GROWN  
DIAMOND ID REPORT**

IGI Report Number **LG389979297**  
 Report Date **December 23, 2019**  
 Shape **ROUND BRILLIANT**

Carat Weight **0.33 Carat**  
 Color Grade **E**  
 Clarity Grade **VVS 2**  
 Cut Grade **IDEAL**  
 Polish **VERY GOOD**  
 Symmetry **VERY GOOD**  
 Fluorescence **NONE**  
 Inscription(s) **LABGROWN IGI  
LG389979297**

Comments:  
 This Chemical Vapor Deposition (CVD)  
 laboratory grown diamond is classified  
 as Type IIa

**IGI LABORATORY GROWN DIAMOND GRADING REPORT**

Report Date **December 23, 2019**  
 IGI Report Number **LG389979297**  
 Shape and Cutting Style **ROUND BRILLIANT**  
 Measurements **4.51 - 4.53 X 2.70 MM**

**GRADING RESULTS**

Carat Weight **0.33 Carat**  
 Color Grade **E**  
 Clarity Grade **VVS 2**  
 Cut Grade **IDEAL**

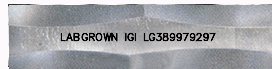
**ADDITIONAL GRADING INFORMATION**

Polish **VERY GOOD**  
 Symmetry **VERY GOOD**  
 Fluorescence **NONE**  
 Inscription(s) **LABGROWN IGI LG389979297**

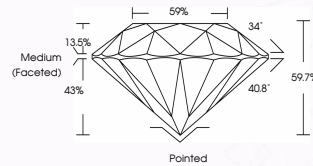
Comments: **This Chemical Vapor Deposition  
(CVD) laboratory grown diamond is  
classified as Type IIa**



PHOTO ENLARGED



LASERSCRIBE™



The Laboratory Grown Diamond (LGD) described in this Report has been analyzed, graded, and LaserScribed® by International Gemological Institute (IGI). A LGD has essentially the same chemical, physical and optical properties as a mined diamond, with the exception of being man-made (a manufactured product). LGDs are typically produced by CVD (chemical vapor deposition) or by HPHT (high pressure high temperature) growth processes and may include post-growth modifications to change the color. IGI utilizes the most advanced techniques and equipment currently available including binocular microscopes, diamond color masters, non-contact-optical measuring devices, a wide range of analytical techniques including FTIR, UV-VIS-NIR, raman spectroscopy, and fluorescence analysis at various excitation wavelengths. This Report includes advanced security features. This Report is neither a guarantee, valuation nor appraisal and by making this report IGI does not agree to purchase or replace the article.

© INTERNATIONAL GEMOLOGICAL INSTITUTE, INC

For Terms & Conditions, please visit [www.igi.org](http://www.igi.org)

THIS DOCUMENT WAS PRODUCED WITH THE FOLLOWING SECURITY MEASURES: SPECIAL DOCUMENT PAPER, INK SCREENS, WATERMARK, BACKGROUND DESIGNS, HOLOGRAM AND OTHER SECURITY FEATURES NOT LISTED AND DO EXCEED DOCUMENT SECURITY INDUSTRY GUIDELINES