



ELECTRONIC COPY

LG795672656 Report verification at igi.org



May 2, 2026 IGI Report Number LG795672656 Description LABORATORY GROWN DIAMOND Shape and Cutting Style CUT CORNERED RECTANGULAR MODIFIED BRILLIANT Measurements 10.83 X 7.74 X 5.49 MM GRADING RESULTS Carat Weight 4.46 CARATS Color Grade G Clarity Grade VVS 2

LABORATORY GROWN DIAMOND REPORT

May 2, 2026 IGI Report Number LG795672656 Description LABORATORY GROWN DIAMOND Shape and Cutting Style CUT CORNERED RECTANGULAR MODIFIED BRILLIANT Measurements 10.83 X 7.74 X 5.49 MM

GRADING RESULTS

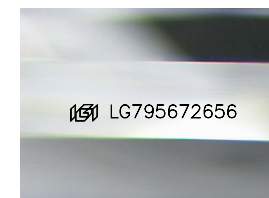
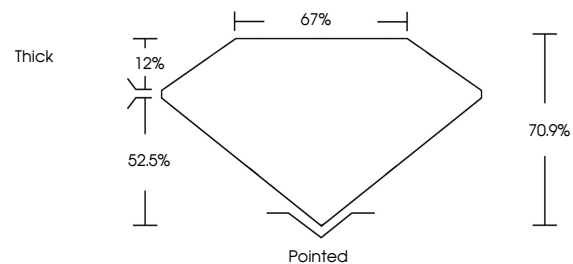
Carat Weight 4.46 CARATS Color Grade G Clarity Grade VVS 2

ADDITIONAL GRADING INFORMATION

Polish EXCELLENT Symmetry EXCELLENT Fluorescence NONE Inscription(s) LG795672656

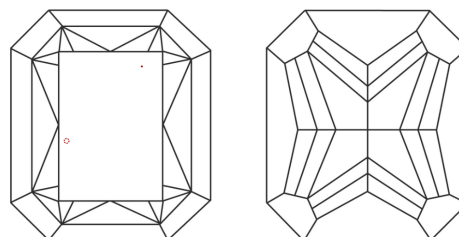
Comments: This Laboratory Grown Diamond was created by Chemical Vapor Deposition (CVD) growth process. Type IIa

PROPORTIONS



Sample Image Used

CLARITY CHARACTERISTICS



KEY TO SYMBOLS

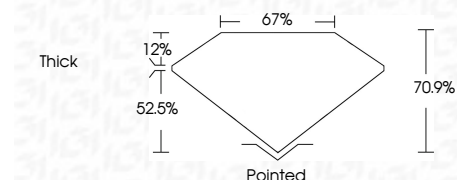
Red symbols indicate internal characteristics. Green symbols indicate external characteristics.

COLOR

D E F G H I J Faint Very Light Light

CLARITY

FL IF VVS 1-2 VS 1-2 SI 1-2 I 1-3 Flawless Internally Flawless Very Very Slightly Included Very Slightly Included Slightly Included Included



ADDITIONAL GRADING INFORMATION

Polish EXCELLENT Symmetry EXCELLENT Fluorescence NONE Inscription(s) LG795672656 Comments: This Laboratory Grown Diamond was created by Chemical Vapor Deposition (CVD) growth process. Type IIa



May 2, 2026 IGI Report No LG795672656 CUT CORNERED RECT. MODIFIED BRILLIANT 10.83 X 7.74 X 5.49 MM 4.46 CARATS G VVS 2 70.9% 67% Thick Pointed EXCELLENT EXCELLENT NONE NONE LG795672656 Comments: This Laboratory Grown Diamond was created by Chemical Vapor Deposition (CVD) growth process. Type IIa