



ELECTRONIC COPY

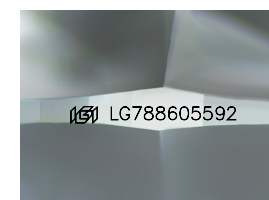
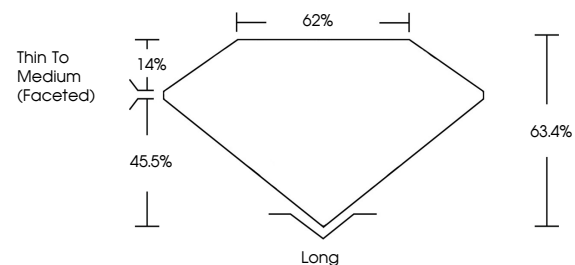
LG788605592
Report verification at igi.org



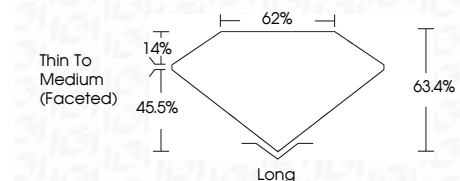
March 31, 2026
IGI Report Number **LG788605592**
Description **LABORATORY GROWN DIAMOND**
Shape and Cutting Style **RECTANGULAR CUSHION MIXED CUT**
Measurements **10.42 X 7.03 X 4.46 MM**
GRADING RESULTS
Carat Weight **2.95 CARATS**
Color Grade **E**
Clarity Grade **VVS 2**

March 31, 2026
IGI Report Number **LG788605592**
Description **LABORATORY GROWN DIAMOND**
Shape and Cutting Style **RECTANGULAR CUSHION MIXED CUT**
Measurements **10.42 X 7.03 X 4.46 MM**

PROPORTIONS



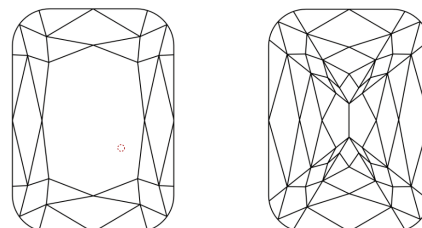
Sample Image Used



GRADING RESULTS

Carat Weight **2.95 CARATS**
Color Grade **E**
Clarity Grade **VVS 2**

CLARITY CHARACTERISTICS



KEY TO SYMBOLS

Red symbols indicate internal characteristics.
Green symbols indicate external characteristics.

COLOR

D E F G H I J Faint Very Light Light

CLARITY

FL	IF	VVS ¹⁻²	VS ¹⁻²	SI ¹⁻²	I ¹⁻³
Flawless	Internally Flawless	Very Very Slightly Included	Very Slightly Included	Slightly Included	Included

ADDITIONAL GRADING INFORMATION

Polish **EXCELLENT**
Symmetry **EXCELLENT**
Fluorescence **NONE**
Inscription(s) **IGI LG788605592**
Comments: This Laboratory Grown Diamond was created by Chemical Vapor Deposition (CVD) growth process. Type IIa

ADDITIONAL GRADING INFORMATION

Polish **EXCELLENT**
Symmetry **EXCELLENT**
Fluorescence **NONE**
Inscription(s) **IGI LG788605592**

Comments: This Laboratory Grown Diamond was created by Chemical Vapor Deposition (CVD) growth process. Type IIa



March 31, 2026
IGI Report No **LG788605592**
RECTANGULAR CUSHION MIXED CUT
10.42 X 7.03 X 4.46 MM
Carat Weight **2.95 CARATS**
Color Grade **E**
Clarity Grade **VVS 2**
Depth **63.4%**
Table **62%**
Girdle **Thin To Medium (Faceted)**
Culet **Long**
Polish **EXCELLENT**
Symmetry **EXCELLENT**
Fluorescence **NONE**
Inscription(s) **IGI LG788605592**
Comments: This Laboratory Grown Diamond was created by Chemical Vapor Deposition (CVD) growth process. Type IIa