



ELECTRONIC COPY

LG784621036
Report verification at igi.org



March 20, 2026
IGI Report Number **LG784621036**
Description **LABORATORY GROWN DIAMOND**
Shape and Cutting Style **RECTANGULAR CUSHION MIXED CUT**
Measurements **16.40 X 10.29 X 6.48 MM**
GRADING RESULTS
Carat Weight **11.00 CARATS**
Color Grade **H**
Clarity Grade **VS 1**

LABORATORY GROWN DIAMOND REPORT

March 20, 2026
IGI Report Number **LG784621036**
Description **LABORATORY GROWN DIAMOND**
Shape and Cutting Style **RECTANGULAR CUSHION MIXED CUT**
Measurements **16.40 X 10.29 X 6.48 MM**

GRADING RESULTS

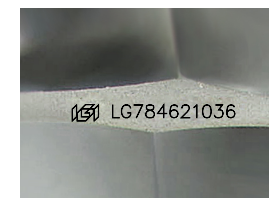
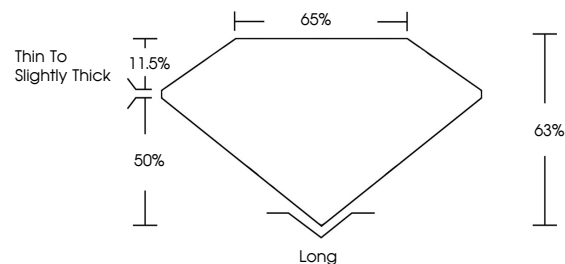
Carat Weight **11.00 CARATS**
Color Grade **H**
Clarity Grade **VS 1**

ADDITIONAL GRADING INFORMATION

Polish **EXCELLENT**
Symmetry **EXCELLENT**
Fluorescence **NONE**
Inscription(s) **IGI LG784621036**

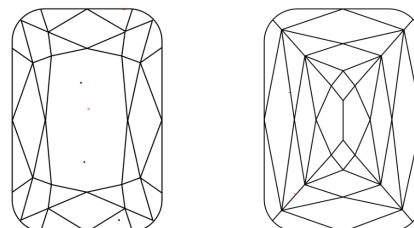
Comments: This Laboratory Grown Diamond was created by Chemical Vapor Deposition (CVD) growth process.
Type IIa

PROPORTIONS



Sample Image Used

CLARITY CHARACTERISTICS



KEY TO SYMBOLS

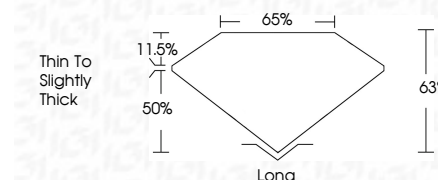
Red symbols indicate internal characteristics.
Green symbols indicate external characteristics.

COLOR

D E F G H I J Faint Very Light Light

CLARITY

FL	IF	VS ¹⁻²	VS ¹⁻²	SI ¹⁻²	I ¹⁻³
Flawless	Internally Flawless	Very Very Slightly Included	Very Slightly Included	Slightly Included	Included



ADDITIONAL GRADING INFORMATION

Polish **EXCELLENT**
Symmetry **EXCELLENT**
Fluorescence **NONE**
Inscription(s) **IGI LG784621036**
Comments: This Laboratory Grown Diamond was created by Chemical Vapor Deposition (CVD) growth process.
Type IIa



March 20, 2026
IGI Report No LG784621036
RECTANGULAR CUSHION MIXED CUT
16.40 X 10.29 X 6.48 MM
Carat Weight 11.00 CARATS
Color Grade H
Clarity Grade VS 1
Depth 63%
Table 50%
Girdle Thin To Slightly Thick
Culet Long
Polish EXCELLENT
Symmetry EXCELLENT
Fluorescence NONE
Inscription(s) IGI LG784621036
Comments: This Laboratory Grown Diamond was created by Chemical Vapor Deposition (CVD) growth process.
Type IIa