



ELECTRONIC COPY

LG780691041 Report verification at igi.org



March 11, 2026 IGI Report Number LG780691041 Description LABORATORY GROWN DIAMOND Shape and Cutting Style CUSHION MODIFIED BRILLIANT Measurements 9.28 X 6.76 X 4.80 MM GRADING RESULTS Carat Weight 2.31 CARATS Color Grade D Clarity Grade VVS 2

LABORATORY GROWN DIAMOND REPORT

March 11, 2026 IGI Report Number LG780691041 Description LABORATORY GROWN DIAMOND Shape and Cutting Style CUSHION MODIFIED BRILLIANT Measurements 9.28 X 6.76 X 4.80 MM

GRADING RESULTS

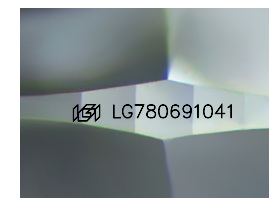
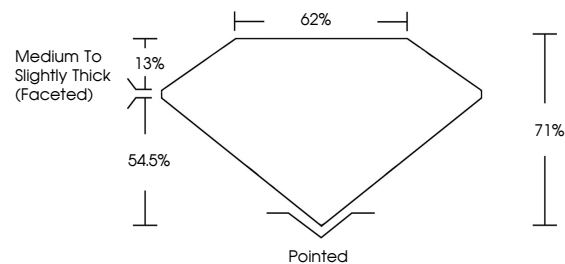
Carat Weight 2.31 CARATS Color Grade D Clarity Grade VVS 2

ADDITIONAL GRADING INFORMATION

Polish EXCELLENT Symmetry EXCELLENT Fluorescence NONE Inscription(s) IGI LG780691041

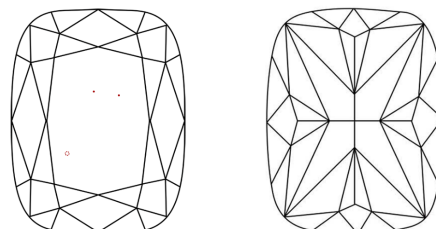
Comments: This Laboratory Grown Diamond was created by Chemical Vapor Deposition (CVD) growth process. Type IIa

PROPORTIONS



Sample Image Used

CLARITY CHARACTERISTICS



KEY TO SYMBOLS

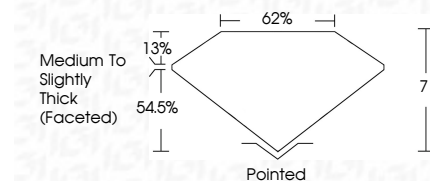
Red symbols indicate internal characteristics. Green symbols indicate external characteristics.

COLOR

D E F G H I J Faint Very Light Light

CLARITY

FL IF VVS 1-2 VS 1-2 SI 1-2 I 1-3 Flawless Internally Flawless Very Very Slightly Included Very Slightly Included Slightly Included Included



ADDITIONAL GRADING INFORMATION

Polish EXCELLENT Symmetry EXCELLENT Fluorescence NONE Inscription(s) IGI LG780691041 Comments: This Laboratory Grown Diamond was created by Chemical Vapor Deposition (CVD) growth process. Type IIa



Summary table: March 11, 2026 IGI Report No LG780691041 CUSHION MODIFIED BRILLIANT 9.28 X 6.76 X 4.80 MM 2.31 CARATS D VVS 2 71% 62% Medium to Slightly Thick (Faceted) Pointed EXCELLENT EXCELLENT NONE NONE IGI LG780691041 Comments: This Laboratory Grown Diamond was created by Chemical Vapor Deposition (CVD) growth process. Type IIa