



ELECTRONIC COPY

LG779613135
Report verification at igi.org



February 28, 2026

IGI Report Number **LG779613135**

Description **LABORATORY GROWN DIAMOND**

Shape and Cutting Style **ROUND MODIFIED BRILLIANT**

Measurements **9.71 - 9.69 X 5.54 MM**

GRADING RESULTS

Carat Weight **3.75 CARATS**

Color Grade **E**

Clarity Grade **VVS 1**

February 28, 2026

IGI Report Number **LG779613135**

Description **LABORATORY GROWN DIAMOND**

Shape and Cutting Style **ROUND MODIFIED BRILLIANT**

Measurements **9.71 - 9.69 X 5.54 MM**

GRADING RESULTS

Carat Weight **3.75 CARATS**

Color Grade **E**

Clarity Grade **VVS 1**

ADDITIONAL GRADING INFORMATION

Polish **EXCELLENT**

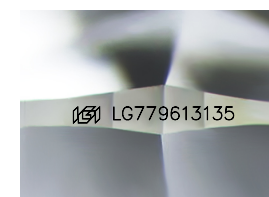
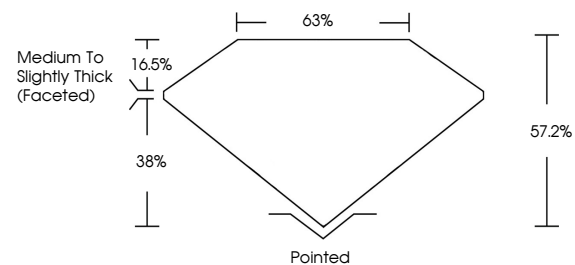
Symmetry **EXCELLENT**

Fluorescence **NONE**

Inscription(s) **IGI LG779613135**

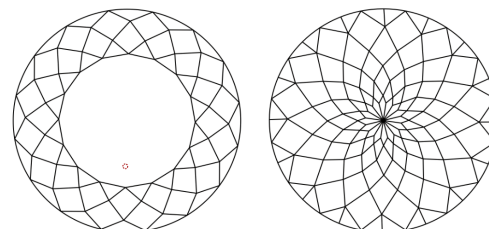
Comments: This Laboratory Grown Diamond was created by Chemical Vapor Deposition (CVD) growth process. Type IIa

PROPORTIONS



Sample Image Used

CLARITY CHARACTERISTICS



KEY TO SYMBOLS

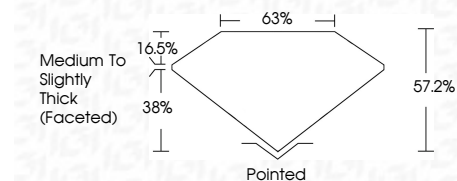
Red symbols indicate internal characteristics.
Green symbols indicate external characteristics.

COLOR

D E F G H I J Faint Very Light Light

CLARITY

FL	IF	VVS ¹⁻²	VS ¹⁻²	SI ¹⁻²	I ¹⁻³
Flawless	Internally Flawless	Very Very Slightly Included	Very Slightly Included	Slightly Included	Included



ADDITIONAL GRADING INFORMATION

Polish **EXCELLENT**

Symmetry **EXCELLENT**

Fluorescence **NONE**

Inscription(s) **IGI LG779613135**

Comments: This Laboratory Grown Diamond was created by Chemical Vapor Deposition (CVD) growth process. Type IIa



February 28, 2026
IGI Report No LG779613135
ROUND MODIFIED BRILLIANT
9.71 - 9.69 X 5.54 MM
3.75 CARATS
E
VVS 1
57.2%
38%
63%
Medium to Slightly Thick (Faceted)
Pointed
EXCELLENT
EXCELLENT
NONE
IGI LG779613135
Comments: This Laboratory Grown Diamond was created by Chemical Vapor Deposition (CVD) growth process. Type IIa