



ELECTRONIC COPY

LG754548535
Report verification at igi.org

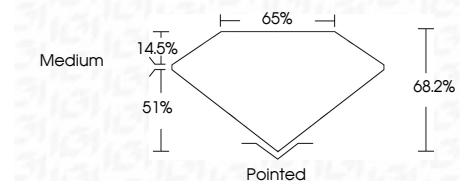


December 5, 2025
IGI Report Number LG754548535
Description LABORATORY GROWN DIAMOND
Shape and Cutting Style CUT CORNERED RECTANGULAR MODIFIED BRILLIANT

Measurements 11.99 X 8.53 X 5.82 MM

GRADING RESULTS

Carat Weight 5.02 CARATS
Color Grade D
Clarity Grade VS 1

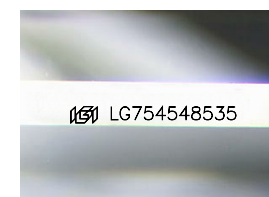


ADDITIONAL GRADING INFORMATION

Polish EXCELLENT
Symmetry EXCELLENT
Fluorescence NONE
Inscription(s) IGI LG754548535
Comments: This Laboratory Grown Diamond was created by Chemical Vapor Deposition (CVD) growth process. Type IIa

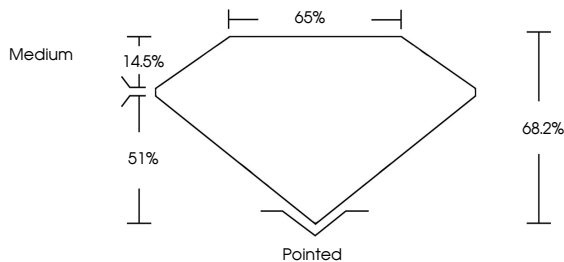


December 5, 2025
IGI Report No LG754548535
CUT CORNERED RECT. MODIFIED BRILLIANT
5.02 CARATS
D
5.02 CARATS
D
11.99 X 8.53 X 5.82 MM
51%
68.2%
65%
Medium
Pointed
EXCELLENT
EXCELLENT
NONE
IGI LG754548535
Comments: This Laboratory Grown Diamond was created by Chemical Vapor Deposition (CVD) growth process. Type IIa

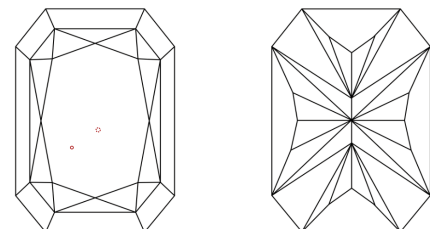


Sample Image Used

PROPORTIONS



CLARITY CHARACTERISTICS



KEY TO SYMBOLS
Red symbols indicate internal characteristics.
Green symbols indicate external characteristics.

COLOR

Color scale table with categories D, E, F, G, H, I, J, Faint, Very Light, Light

CLARITY

Clarity scale table with categories FL, IF, VS 1-2, VS 1-2, SI 1-2, I 1-3, Flawless, Internally Flawless, Very Very Slightly Included, Very Slightly Included, Slightly Included, Included

