



ELECTRONIC COPY

LG749523032 Report verification at igi.org

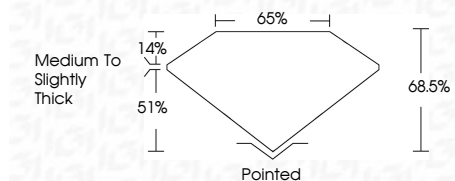


November 13, 2025 IGI Report Number LG749523032 Description LABORATORY GROWN DIAMOND Shape and Cutting Style CUT CORNERED RECTANGULAR MODIFIED BRILLIANT

Measurements 10.91 X 7.44 X 5.10 MM

GRADING RESULTS

Carat Weight 3.57 CARATS Color Grade D Clarity Grade VS 1



ADDITIONAL GRADING INFORMATION

Polish EXCELLENT Symmetry EXCELLENT Fluorescence NONE Inscription(s) (IGI) LG749523032 Comments: This Laboratory Grown Diamond was created by Chemical Vapor Deposition (CVD) growth process. Type IIa



November 13, 2025 IGI Report No LG749523032 CUT CORNERED RECT. MODIFIED BRILLIANT 3.57 CARATS D VS 1 68.5% 65% Medium to Slightly Thick Pointed EXCELLENT EXCELLENT NONE (IGI) LG749523032 Comments: This Laboratory Grown Diamond was created by Chemical Vapor Deposition (CVD) growth process. Type IIa

November 13, 2025 IGI Report Number LG749523032 Description LABORATORY GROWN DIAMOND Shape and Cutting Style CUT CORNERED RECTANGULAR MODIFIED BRILLIANT Measurements 10.91 X 7.44 X 5.10 MM

GRADING RESULTS

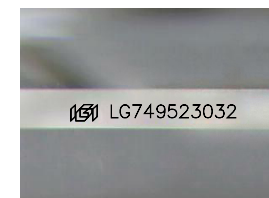
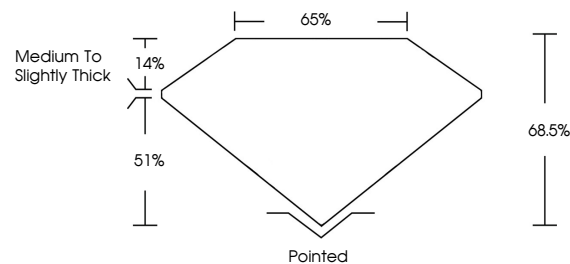
Carat Weight 3.57 CARATS Color Grade D Clarity Grade VS 1

ADDITIONAL GRADING INFORMATION

Polish EXCELLENT Symmetry EXCELLENT Fluorescence NONE Inscription(s) (IGI) LG749523032

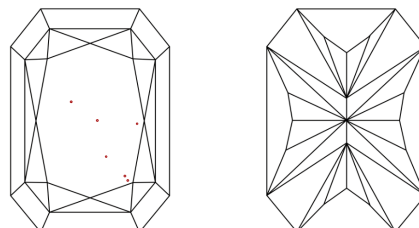
Comments: This Laboratory Grown Diamond was created by Chemical Vapor Deposition (CVD) growth process. Type IIa

PROPORTIONS



Sample Image Used

CLARITY CHARACTERISTICS



KEY TO SYMBOLS

Red symbols indicate internal characteristics. Green symbols indicate external characteristics.

COLOR

D E F G H I J Faint Very Light Light

CLARITY

FL IF VS 1-2 VS 2-3 SI 1-2 I 1-3 Flawless Internally Flawless Very Very Slightly Included Very Slightly Included Slightly Included Included

