



ELECTRONIC COPY

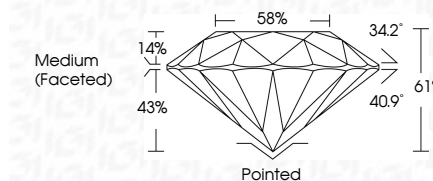
LG652401286
Report verification at igi.org



September 20, 2024
IGI Report Number **LG652401286**
Description **LABORATORY GROWN DIAMOND**
Shape and Cutting Style **ROUND BRILLIANT**
Measurements **8.84 - 8.89 X 5.40 MM**

GRADING RESULTS

Carat Weight **2.60 CARATS**
Color Grade **D**
Clarity Grade **VVS 2**
Cut Grade **IDEAL**

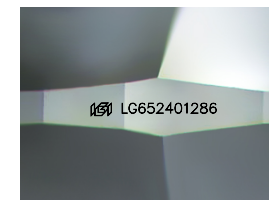


ADDITIONAL GRADING INFORMATION

Polish **EXCELLENT**
Symmetry **EXCELLENT**
Fluorescence **NONE**
Inscription(s) **IGI LG652401286**
Comments: HEARTS & ARROWS
This Laboratory Grown Diamond was created by Chemical Vapor Deposition (CVD) growth process. Type IIa

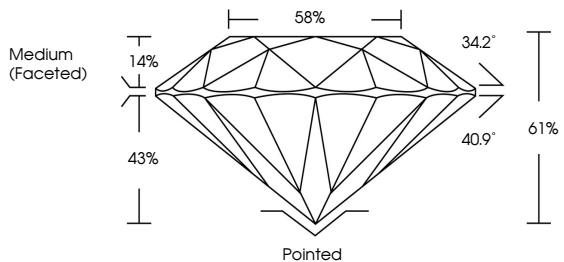


September 20, 2024	IGI Report No LG652401286	2.60 CARATS	D	VVS 2	IDEAL	61%	58%	Medium (Faceted)	Pointed	EXCELLENT	EXCELLENT	NONE	IGI LG652401286
IGI Report No	LG652401286	Carat Weight	2.60 CARATS	Color Grade	D	Clarity Grade	VVS 2	Depth	43%	Cut Grade	IDEAL	Fluorescence	NONE
Shape and Cutting Style	ROUND BRILLIANT	Measurements	8.84 - 8.89 X 5.40 MM	Table	14%	Girdle	61%	Inscriptions(s)	IGI LG652401286	Comments:	HEARTS & ARROWS	This Laboratory Grown Diamond was created by Chemical Vapor Deposition (CVD) growth process.	Type IIa

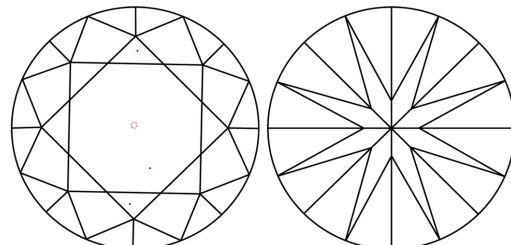


Sample Image Used

PROPORTIONS



CLARITY CHARACTERISTICS



KEY TO SYMBOLS

Red symbols indicate internal characteristics.
Green symbols indicate external characteristics.



COLOR

D E F G H I J Faint Very Light Light

CLARITY

IF	VVS ¹⁻²	VS ¹⁻²	SI ¹⁻²	I ¹⁻³
Internally Flawless	Very Very Slightly Included	Very Slightly Included	Slightly Included	Included

