



**ELECTRONIC COPY**

## LABORATORY GROWN DIAMOND REPORT

September 27, 2022

IGI Report Number **LG549295844**

Description	LABORATORY GROWN DIAMOND
-------------	-----------------------------

Shape and Cutting Style **OVAL BRILLIANT**

Measurements 10.89 X 7.61 X 4.83 MM

## GRADING RESULTS

Carat Weight 2.54 CARATS

Color Grade F

Clarity Grade VS 1

### ADDITIONAL GRADING INFORMATION

Polish EXCELLENT

Symmetry **EXCELLENT**

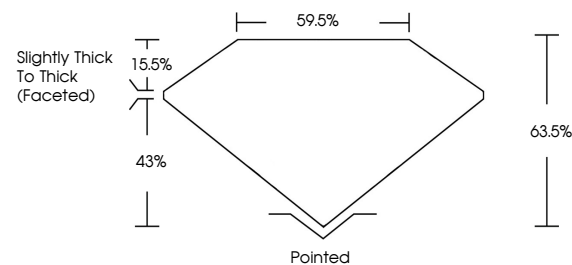
Fluorescence **NONE**

Inscription(s) LABGROWN IGI LG549295844

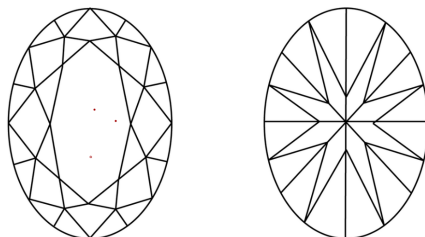
Comments: This Laboratory Grown Diamond was created by Chemical Vapor Deposition (CVD) growth process and may include post-growth treatment.  
Type IIa

LG549295844

## PROPORTIONS



## CLARITY CHARACTERISTICS

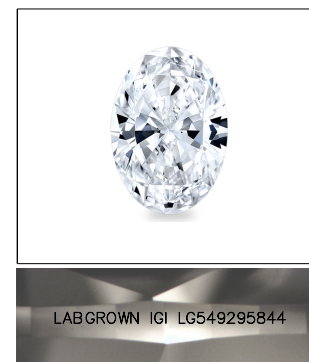


### KEY TO SYMBOLS

Red symbols indicate internal characteristics.  
Green symbols indicate external characteristics.

## GRADING SCALES

COLOR GRADING SCALE	CL		NC	FT	VL	LT
	COLORLESS D-F		NEAR COLORLESS G-J	FAINT K-M	VERY LIGHT N-R	LIGHT S-Z
CLARITY (10x) GRADING SCALE	FL	IF	VVS	VS	SI	I
	FLAWLESS INTERNALLY FLAWLESS		VERY VERY SLIGHTLY INCLUDED	VERY SLIGHTLY INCLUDED	SLIGHTLY INCLUDED	INCLUDED

LASERSCRIBE<sup>SM</sup>

Sample Image Used



© IGI 2020, International Gemological Institute

FD - 10 20

LABORATORY GROWN DIAMOND REPORT

September 27, 2022

IGI Report Number **LG549295844**

Description **LABORATORY GROWN**

Shape and Cutting Style **OVAL BRILLIANT**

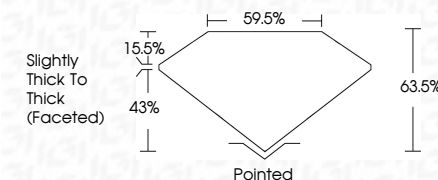
Measurements **10.89 X 7.61 X 4.83 MM**

## GRADING RESULTS

Carat Weight **2.54 CARATS**

Color Grade F

Clarity Grade VS 1



### ADDITIONAL GRADING INFORMATION

Polish **EXCELLENT**Symmetry **EXCELLENT**Fluorescence **NONE**

Inscription(s) LABGROWN IGI LG549295844

Comments: This Laboratory Grown Diamond was created by Chemical Vapor Deposition (CVD) growth process and may include post-growth treatment.  
Type IIa



September 27, 2022	G/ Report No. LG546295844	
C/ VAL BRILLANT		
10.09 X 7.61 X 4.83 MM		
Color	2.54 CARATS	
Color Grade	F	
Clarity Grade	VS 1	
Depth	63.5%	
Table	59.5%	
Grade	Slightly Thick To Thick (faced)	
Culet	Pointed	
Polish	EXCELLENT	
Symmetry	EXCELLENT	
Fluorescence	NONE	
Inscriptions(s)	LAGROWIN LG1 LG546295844	
Comments:		
		This Laboratory Grown Diamond was found to be a Very Good Quality (VGV) diamond. It was grown using CVD growth process and may include post-growth treatment. Type IIA