



**ELECTRONIC COPY**

## LABORATORY GROWN DIAMOND REPORT

|                         |                             |
|-------------------------|-----------------------------|
| September 5, 2022       |                             |
| IGI Report Number       | LG544258883                 |
| Description             | LABORATORY GROWN<br>DIAMOND |
| Shape and Cutting Style | ROUND BRILLIANT             |
| Measurements            | 8.86 - 8.90 X 5.25 MM       |

## GRADING RESULTS

|               |             |
|---------------|-------------|
| Carat Weight  | 2.52 CARATS |
| Color Grade   | F           |
| Clarity Grade | VS 1        |
| Cut Grade     | IDEAL       |

### ADDITIONAL GRADING INFORMATION

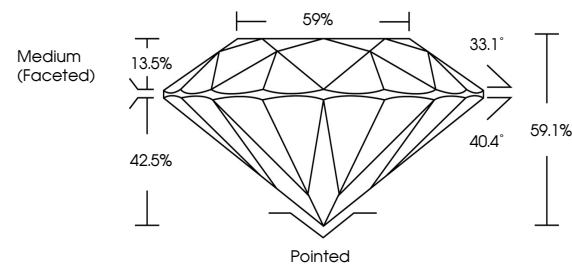
|              |           |
|--------------|-----------|
| Polish       | EXCELLENT |
| Symmetry     | EXCELLENT |
| Fluorescence | NONE      |

Inscription(s) LABGROWN IGI LG544258883

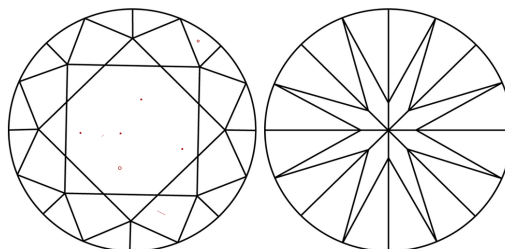
Comments: This Laboratory Grown Diamond was created by Chemical Vapor Deposition (CVD) growth process and may include post-growth treatment.  
Type IIa

LG544258883

## PROPORTIONS



## CLARITY CHARACTERISTICS

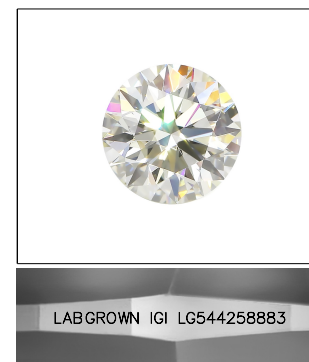


## KEY TO SYMBOLS

Red symbols indicate internal characteristics.  
Green symbols indicate external characteristics.

## GRADING SCALES

|                             |                              |  |                             |  |                        |  |                   |  |           |  |
|-----------------------------|------------------------------|--|-----------------------------|--|------------------------|--|-------------------|--|-----------|--|
| COLOR GRADING SCALE         | CL                           |  | NC                          |  | FT                     |  | VLT               |  | LT        |  |
|                             | COLORLESS D-F                |  | NEAR COLORLESS G-J          |  | FAINT K-M              |  | VERY LIGHT N-R    |  | LIGHT S-Z |  |
| CLARITY (10x) GRADING SCALE | FL IF                        |  | VVS                         |  | VS                     |  | SI                |  | I         |  |
|                             | FLAWLESS INTERNALLY FLAWLESS |  | VERY VERY SLIGHTLY INCLUDED |  | VERY SLIGHTLY INCLUDED |  | SLIGHTLY INCLUDED |  | INCLUDED  |  |

LASERSCRIBE<sup>SM</sup>

Sample Image Used

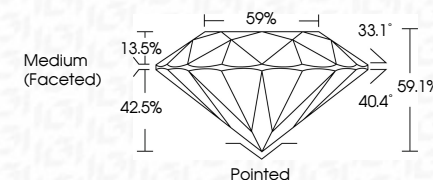


© IGI 2020, International Gemological Institute

FD - 10 20

LABORATORY GROWN DIAMOND REPORT

|                         |                             |
|-------------------------|-----------------------------|
| September 5, 2022       |                             |
| IGI Report Number       | LG544258883                 |
| Description             | LABORATORY GROWN<br>DIAMOND |
| Shape and Cutting Style | ROUND BRILLIANT             |
| Measurements            | 8.86 - 8.90 X 5.25 MM       |
| <b>GRADING RESULTS</b>  |                             |
| Carat Weight            | 2.52 CARATS                 |
| Color Grade             | F                           |
| Clarity Grade           | VS 1                        |
| Cut Grade               | IDEAL                       |



### ADDITIONAL GRADING INFORMATION

|                |                          |
|----------------|--------------------------|
| Polish         | EXCELLENT                |
| Symmetry       | EXCELLENT                |
| Fluorescence   | NONE                     |
| Inscription(s) | LABGROWN IGI LG544258883 |

Inscription(s) LABGROWN IGI LG544258883

Comments: This Laboratory Grown Diamond was created by Chemical Vapor Deposition (CVD) growth process and may include post-growth treatment.  
Type IIa



|                   |                              |   |               |                  |
|-------------------|------------------------------|---|---------------|------------------|
| September 5, 2022 | GI Report No. LG54025883     |   | 2.52 CARATS   |                  |
|                   | ROUND BRILLIANT              |   | F             |                  |
|                   | Depth: 86.1 - 89.0 X 5.25 MM |   |               |                  |
|                   | Carat Weight                 | Color Grade   | Clarity Grade | VS 1             |
|                   |                              |   | Cut Grade     | IDEAL            |
|                   |                              |   | Depth         | 59.1%            |
|                   |                              |   | Table         | 59%              |
|                   |                              |   | Girdle        | Medium (Faceted) |
|                   | Culet                        | Polished  | Symmetry      | Excellent        |
|                   | Fluorescence                 | None  | Fluorescence  | None             |
|                   | Inscriptions (3)             | LG54025883  |               |                  |
|                   | Comments:                    | This Laboratory Grown Diamond was created by Chemical Vapor Deposition (CVD) growth process and may include natural inclusions and treatment. |               |                  |
|                   | Type Ia                      |   |               |                  |

Comments: This Laboratory Grown Diamond was created by Chemical Vapor Deposition (CVD) growth process and may include post-growth treatment.