



**ELECTRONIC COPY**

## LABORATORY GROWN DIAMOND REPORT

January 18, 2022	
IGI Report Number	LG510177560
Description	LABORATORY GROWN DIAMOND
Shape and Cutting Style	OVAL BRILLIANT
Measurements	10.61 X 7.64 X 4.97 MM

## GRADING RESULTS

Carat Weight	2.52 CARATS
Color Grade	D
Clarity Grade	VS 1

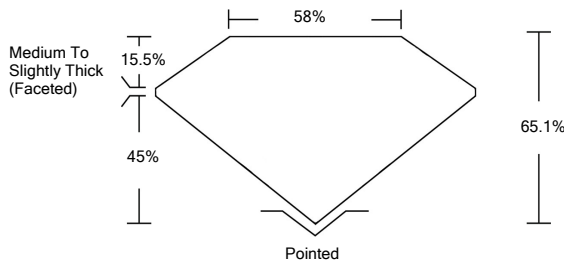
### ADDITIONAL GRADING INFORMATION

Polish	EXCELLENT
Symmetry	EXCELLENT
Fluorescence	NONE
Inscription(s)	LABGROWN IGI LG510177560

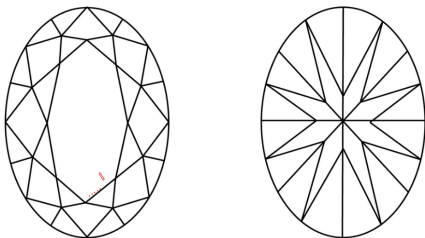
Comments: As Grown - No indication of post-growth treatment.  
This Laboratory Grown Diamond was created by High Pressure High Temperature (HPHT) growth process.  
Type II

LG510177560

## PROPORTIONS



## CLARITY CHARACTERISTICS



## KEY TO SYMBOLS

Red symbols indicate internal characteristics.  
Green symbols indicate external characteristics.

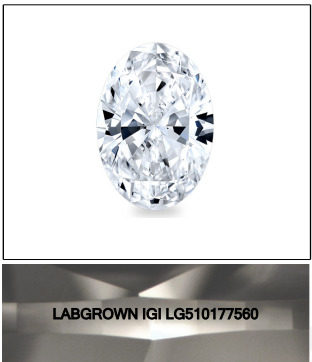
## GRADING SCALES

COLOR GRADING SCALE	CL		NC	FT	VLT	LT
	COLORLESS D-F		NEAR COLORLESS G-J	FAINT K-M	VERY LIGHT N-R	LIGHT S-Z
CLARITY (10x) GRADING SCALE	FL	IF	VVS	VS	SI	I
	FLAWLESS INTERNALLY FLAWLESS		VERY VERY SLIGHTLY INCLUDED	VERY SLIGHTLY INCLUDED	SLIGHTLY INCLUDED	INCLUDED

The laboratory grown diamond described in this Report (Report) has been graded, tested, analyzed, examined and/or inscribed by International Gemological Institute (I.G.I.). A laboratory grown diamond is one that has essentially the same chemical, physical and optical properties as a natural diamond. I.G.I. employs and utilizes those techniques and equipment currently available to I.G.I., including, without limitation, 10X magnification, corrected triplet loupe, binocular microscope, master color comparison stones, non-contact-optical spectrophotometer, diamond grading system, and other instruments and/or processes as deemed appropriate by I.G.I. This Report includes advanced security features. A duly accredited gemologist or jeweler can advise you with respect to the importance of and interrelationship between cut, color, clarity and carat weight.

**THIS REPORT IS NEITHER A GUARANTEE, VALUATION, NOR APPRAISAL OF THE GEMSTONE DESCRIBED HEREIN. PLEASE CONSULT YOUR JEWELER FOR LIMITATIONS AND RESTRICTIONS SET FORTH ONLINE. FOR MORE INFORMATION, VISIT [WWW.IGI.ORG](http://WWW.IGI.ORG) OR CALL 1-888-BUY-IGI.**

© INTERNATIONAL GEMOLOGICAL INSTITUTE, INC.

**LASERSCRIBE<sup>SM</sup>**

### Sample Image Used



© IGI 2020, International Gemological Institute

FD - 10 20



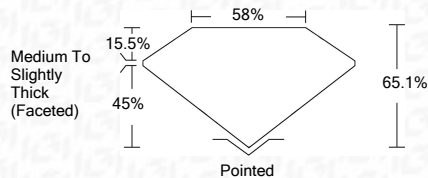
THIS DOCUMENT WAS PRODUCED WITH THE FOLLOWING SECURITY MEASURES: SPECIAL DOCUMENT PAPER, INK SCREENS, WATERMARK, BACKGROUND DESIGNS, HOLOGRAM AND OTHER SECURITY FEATURES NOT LISTED AND DO EXCEED DOCUMENT SECURITY INDUSTRY GUIDELINES

## LABORATORY GROWN DIAMOND REPORT

January 18, 2022	
IGI Report Number	LG510177560
Description	LABORATORY GROWN DIAMOND
Shape and Cutting Style	OVAL BRILLIANT
Measurements	10.61 X 7.64 X 4.97 MM

## GRADING RESULTS

Carat Weight	2.52 CARATS
Color Grade	D
Clarity Grade	VS 1



### ADDITIONAL GRADING INFORMATION

Polish	EXCELLENT
Symmetry	EXCELLENT
Fluorescence	NONE
Inscription(s)	LABGROWN IQI LG510177560

Comments: As Grown - No indication of post-growth treatment.  
This Laboratory Grown Diamond was created by High Pressure High Temperature (HPHT) growth process.  
Type II



IGI

January 15, 2022	IGI Report No. LGS10177680	
OGAL BRILLIANT	2.82 CARATS	
10.61 X 7.64 X 4.57 MM	D	
Carat Weight	VS 1	
Color Grade	65.1%	
	58%	
	Medium To Slightly Thick (Faceted)	
	Pointed	
	EXCELLENT	
	EXCELLENT	
	NONE	
	LAB-GROWN IGI	
	LSG10177680	
As Grown - No indication of post-growth treatment.		
This Laboratory Grown Diamond was created by a high pressure high temperature (HPHT) process.		
Type II		

**As Grown - No Indication of post-growth treatment.**  
This Laboratory Grown Diamond was created by High Pressure High Temperature (HPHT) growth process.

Type II