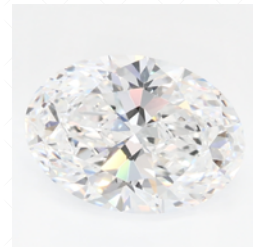


LAB GROWN DIAMOND

GCAL LG360796031

March 26, 2026



4Cs GRADING

Carat Weight **1.35**
Color **D**
Clarity **VVS1**
Cut **8X**

Certificate No **GCAL LG360796031**
Identification **Lab Grown Diamond**
Shape and Cutting Style **Oval Brilliant**
Measurements **8.89 x 6.31 x 3.83 mm**
Fluorescence **None**
Girdle **Thin to Medium, Faceted**
Culet **None**
Inscription **GCAL 8X LG360796031**
Growth Method **HPHT**

GCAL has examined this lab grown diamond and certifies that the specifications noted in this document are accurate within recognized gemological tolerances. GCAL is an independent third-party and stands behind our grading with a 4Cs Consumer Guarantee. The guarantee, grading scales and all images unique to this lab grown diamond are available at GCALUSA.com



GCAL BY SARINE

GCALUSA.com T+1 212-869-8985

Headquarters 580 fifth Ave, Flr. 27
New York, NY 10036
Laboratories New York, USA
Surat, INDIA

This laboratory grown diamond was created by the HPHT (High Pressure, High Temperature) method, and the same chemical, physical and optical properties as a mined diamond. This diamond is Type II.



Gemprint is the unique optical fingerprint of your lab grown diamond. This patented technology is positive, forensic identification.

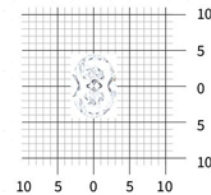
Protect your investment by registering your lab grown diamond and receive discounts up to 10% off your annual insurance premiums. **Register your diamond at Gemprint.com**

Laser Inscription



Illustration depicts approx. girdle appearance

Actual Size



8.89 x 6.31 x 3.83 millimeters (mm)

Photomicrographs

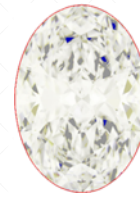


Actual photographs of the crown and pavilion of this lab grown diamond. View hi-resolution photos at GCALUSA.com

Clarity Characteristics and Locations

Pinpoint Star

8X is the ultimate achievement in precision diamond cutting. Only extraordinarily brilliant and beautiful diamonds achieve **EXCELLENT** grades in all **EIGHT** aspects of CUT quality assessment.



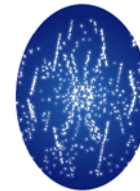
Optical Brilliance

is the overall return of white light to the viewer. It is measured to the thousandth decimal place and is represented in this image. The white areas indicate light return / brilliance, and the dark-blue areas indicate light loss.



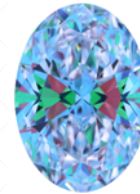
Fire

results when white light travels through a diamond and is dispersed into its rainbow of spectral colors. These flashes of color contribute to sparkle and are best viewed as the diamond moves.



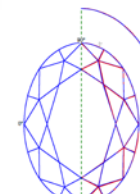
Scintillation

is the flashes of white light, or sparkle, produced when light is reflected from a diamond as it moves. This image shows the light returned from a single beam of light when your lab grown diamond is rotated in nine positions.



Optical Symmetry

is visualized in this photograph of your lab grown diamond taken in a specific colored lighting environment. The evenness of the pattern illustrates the precision and uniformity of facet shapes and alignment.



Shape Aesthetics

analyze features unique to Ovals:

The outline and axis symmetry of every 8X[®] oval diamond is assessed to confirm the oval is a desirable ellipse shape, without 'shoulder bulges' or an uneven 'egg' shape. The axis symmetry images shown here are part of these measurements.

The dark area in the center of some oval brilliants is known as a "bowtie". This effect is measured by machine vision to ensure all 8X[®] ovals have very minimal bow-tie effect and balanced contrast.

GCAL LG360796031 OV 1.35 D VVS1 8X

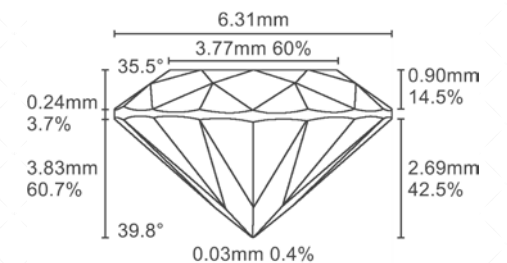


Scan QR code to view photos and videos of this lab grown diamond, and the 8X grading scales, go to <https://www.gcalusa.com/c/360796031>

| | | | | |
|------------------------------|-----------|-----------|-----------------|-----------------|
| 1. Polish | | | | |
| P Poor | F Fair | G Good | VG Very Good | EX Excellent |
| 2. External Symmetry | | | | |
| P Poor | F Fair | G Good | VG Very Good | EX Excellent |
| 3. Proportions | | | | |
| P Poor | F Fair | G Good | VG Very Good | EX Excellent |
| 4. Optical Brilliance | | | | |
| P Poor | F Fair | G Good | VG Very Good | EX Excellent |
| 5. Fire | | | | |
| P Poor | F Fair | G Good | VG Very Good | EX Excellent |
| 6. Scintillation | | | | |
| P Poor | F Fair | G Good | VG Very Good | EX Excellent |
| 7. Optical Symmetry | | | | |
| P Poor | F Fair | G Good | VG Very Good | EX Excellent |
| 8. Shape Aesthetics | | | | |
| P Poor | F Fair | G Good | VG Very Good | EX Excellent |

Proportion Diagram

Optical scanning technology measures each facet and angle to produce an accurate, to-scale diagram of this lab grown diamond.



DIAMOND SHAPES



CARAT WEIGHT SIZES

| Carat Weight | 2.50 | 2.00 | 1.50 | 1.00 | 0.75 | 0.50 |
|--------------|--------|--------|--------|--------|--------|--------|
| Approx. Size | | | | | | |
| Diameter | 8.60mm | 8.00mm | 7.30mm | 6.40mm | 5.80mm | 5.10mm |

DIAMOND CLARITY GRADING SCALE

| FL | IF | VVS1 | VVS2 | VS1 | VS2 | S11 | S12 | I1 | I2 | I3 |
|--------------------------|----|-----------------------------|------|------------------------|-----|-------------------|-----|----------------|----|----|
| FLAWLESS - INTERNALLY FL | | VERY VERY SLIGHTLY INCLUDED | | VERY SLIGHTLY INCLUDED | | SLIGHTLY INCLUDED | | INCLUDED/PIQUE | | |

DIAMOND COLOR GRADING SCALE



D - Z DIAMOND COLOR GRADING SCALE

DIAMOND FLUORESCENCE GRADING SCALE



DIAMOND POLISH & SYMMETRY GRADING SCALE

| | | | | |
|-----------|-----------|------|------|------|
| EXCELLENT | VERY GOOD | GOOD | FAIR | POOR |
|-----------|-----------|------|------|------|

BRILLIANT CUT DIAGRAM



BUY WITH CONFIDENCE

GCAL BY SARINE™ 4Cs GRADING GUARANTEE

The GCAL by Sarine™ philosophy is simple: we believe consumers should feel confident about their lab grown diamond purchase, in the same way we believe experts should be accountable and stand behind their work.

This is why your lab grown diamond is protected by a zero tolerance, money-backed grading guarantee. You should know that the GCAL by Sarine™ 4Cs Grading Certificate is the only 4Cs grading certificate in the world that comes with a guarantee that ensures the accuracy of the certified lab grown diamonds' weight and quality grades. If the carat weight or any of the cut, color, or clarity grades provided in this GCAL by Sarine™ 4Cs Grading Certificate is lower than the weight or quality grade of your certified lab grown diamond, GCAL by Sarine™ will reimburse you the difference between what you paid for the lab grown diamond and the current fair value of an equivalent lab grown diamond in the market in which it was purchased, pursuant to the newly established grades. Kindly see additional details, including the limitations of the guarantee, at GCALUSA.com.

MISSION STATEMENT

To provide the most accurate and consistent gemological grading, with uncompromising integrity and unparalleled customer service.

GEMPRINT®

Having a traceable, unique "fingerprint" of your lab grown diamond adds future protection to your investment, as well as peace of mind. GCAL by Sarine™ records the distinctive Gemprint of every diamond we certify. This patented technology for positive identification is recognized worldwide as forensic evidence and identification. Register your lab grown diamond at GEMPRINT.com

CERTIFICATE VERIFICATION

You can verify the authenticity of this certificate by entering your GCAL by Sarine™ Certificate Number at GCALUSA.com. You can also download a complimentary digital copy of this document to send to your insurance company.



GUARANTEED CERTIFICATE

LAB GROWN



8X® is the highest achievement in precision diamond cutting. The GCAL 8X Ultimate Diamond Cut Grading System encompasses all aspects of diamond CUT quality assessment. Your lab Grown diamond has achieved grades of Excellent in all eight aspects of CUT quality assessment. As a result, this lab grown diamond is recognized for its extraordinary brilliance and beauty.

PHYSICAL EXCELLENCE

The first three of the 8X grading factors analyze the exactness of the physical surface, the facet shapes, as well as the angles. This includes the Polish, External Symmetry and Proportions.

Decades of meticulous mathematical calculations have determined the narrow proportion ranges required to produce superior cut diamonds. Each shape has been studied individually to find the most aesthetically pleasing parameters. Some of the factors considered are listed below.

To view the proportions specifications for each shape, please visit our website GCALUSA.COM

| | |
|-----------------------|---------------------------|
| Table % | Lower Girdle Facet Length |
| Depth % | Star Length |
| Crown Angle/Height | Girdle Thickness |
| Pavilion Angle/Height | Culet Size |

LIGHT PERFORMANCE EXCELLENCE

The next three of the 8X grading factors are Brilliance, Fire and Scintillation, which analyze the light handling ability of your lab grown diamond. The combination of these factors is the essence of what makes any diamond visibly shine, dance and sparkle from across a room. Fire and Scintillation are graded while the diamond is in motion and interacting with light. View the Fire and Scintillation videos of this lab grown diamond at GCALUSA.com or by scanning the QR code on this certificate.

OPTICAL EXCELLENCE

The last two 8X grading factors consider optical excellence. These factors scrutinize the craftsmanship, the precise alignment of the crown and pavilion facets, the shape outline, and the length to width ratio, ensuring the lab grown diamond achieves aesthetic perfection.

Grading scales for each of the 8X grading factors can be viewed at GCALUSA.com

Independently Graded and Guaranteed by GCAL by Sarine™