

# LAB GROWN DIAMOND

GCAL LG312780757

October 20, 2021



## 4C's GRADING

Carat Weight 1.79  
Color F  
Clarity VS2  
Cut **8X**

Certificate No	GCAL LG312780757
Identification	Lab Grown Diamond
Shape and Cutting Style	Round Brilliant
Measurements	7.84-7.87x4.78mm
Fluorescence	None
Girdle	Medium to Sl.Thick, Faceted
Culet	None
Inscription	LAB GROWN, GCAL <b>8X</b> LG312780757

### ONE LOCATION. ONE STANDARD. GRADED IN THE USA

Gem Certification & Assurance Lab has examined this lab grown diamond and certifies that the specifications noted in this document are accurate within recognized gemological tolerances. GCAL is an independent third-party and stands behind our grading with a 4Cs Consumer Guarantee. The guarantee, grading scales and all images unique to this lab grown diamond are available at GCALUSA.com.



This laboratory grown diamond was created by the CVD (Chemical Vapor Deposition) method and has the same chemical, physical, and optical properties as a mined diamond. This diamond is Type IIa.



Gemprint is the unique optical fingerprint of your lab grown diamond. This patented technology is positive, forensic identification.

Protect your investment by registering your lab grown diamond and receive discounts up to 10% off your annual insurance premiums. **Register your diamond at GEMPRINT.com**

## Laser Inscription

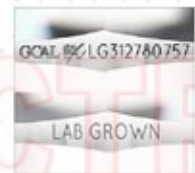
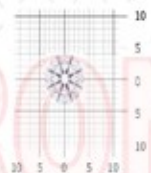


Illustration depicts approx. girdle appearance

## Actual Size



Measurements in millimeters (mm)

## Photomicrographs



Actual photographs of the crown and pavilion of this lab grown diamond. View hi-resolution photos at GCALUSA.com

### Clarity Characteristics and Locations

Crystal	Table
Pinpoints	Throughout Crown

**8X**<sup>™</sup> is the ultimate achievement in precision diamond cutting. Only extraordinarily brilliant and beautiful diamonds achieve **EXCELLENT** grades in all **EIGHT** aspects of CUT quality assessment.



## Optical Brilliance

is the overall return of white light to the viewer. It is measured to the thousandth decimal place and is represented in this image. The white areas indicate light return / brilliance, and the dark-blue areas indicate light loss.



## Fire

results when white light travels through a diamond and is dispersed into its rainbow of spectral colors. These flashes of color contribute to sparkle and are best viewed as the diamond moves.



## Scintillation

is the flashes of white light, or sparkle, produced when light is reflected from a diamond as it moves. This image shows the light returned from a single beam of light when your lab grown diamond is rotated in nine positions.



## Optical Symmetry

is visualized in this photograph of your lab grown diamond taken in a specific colored lighting environment. The evenness of the pattern illustrates the precision and uniformity of facet shapes and alignment.



## Hearts & Arrows

Precision faceting is visualized as Hearts & Arrows when round brilliant cut diamonds are viewed in specific lighting conditions. Each pattern is the result of superior facet placement and exact alignment.

GCAL LG312780757 RB 1.79 F VS2  
Scan QR code to view photos and videos of this lab grown diamond, and the **8X**<sup>™</sup> grading scales, or go to <https://www.gcalusa.com/cr/312780757>



### 1. Polish

P	F	G	VG	<b>EX</b>
Poor	Fair	Good	Very Good	Excellent

### 2. External Symmetry

P	F	G	VG	<b>EX</b>
Poor	Fair	Good	Very Good	Excellent

### 3. Proportions

P	F	G	VG	<b>EX</b>
Poor	Fair	Good	Very Good	Excellent

### 4. Optical Brilliance

P	F	G	VG	<b>EX</b>
Poor	Fair	Good	Very Good	Excellent

### 5. Fire

P	F	G	VG	<b>EX</b>
Poor	Fair	Good	Very Good	Excellent

### 6. Scintillation

P	F	G	VG	<b>EX</b>
Poor	Fair	Good	Very Good	Excellent

### 7. Optical Symmetry

P	F	G	VG	<b>EX</b>
Poor	Fair	Good	Very Good	Excellent

### 8. Hearts & Arrows

P	F	G	VG	<b>EX</b>
Poor	Fair	Good	Very Good	Excellent

## Proportion Diagram

Optical scanning technology measures each facet and angle to produce an accurate, to-scale diagram of this lab grown diamond.

